



ПОЛНОСТЬЮ АВТОМАТИЧЕСКАЯ ШЛИФОВАЛЬНО-ПОЛИРОВАЛЬНАЯ МАШИНА

QPOL 300 BOT

**With the Qpol 300 BOT, QATM has developed a unique and fully automatic compact device that automates the entire grinding and polishing process, including cleaning and drying.**

Intuitive operation via touchscreens and up to two autonomous sample heads enable fast and automated sample preparation. Thanks to its modular line design, it can be adapted to individual requirements.

**The advantages of automation with the Qpol 300 BOT:**

- | **Automated processes:** Grinding, polishing, and cleaning are fully automated.
- | **Flexible media selection:** Choose customized media tailored to your specific requirements.
- | **High reproducibility:** Ensure consistent results through reliable processes.



[Смотреть видео](#)

## MODULAR CONSTRUCTION

В прочный алюминиевый корпус можно установить от 4 до 8 рабочих станций. До 11 различных операций можно запрограммировать в необходимой последовательности для конкретного применения. Опции включают в себя: предварительное шлифование, шлифование и полирование, а также очистка и сушка в любой комбинации. Qpol 300BOT автоматически переходит от одной стадии к другой, избавляя пользователей от ручного трудоемкого процесса по очистке держателя образцов между стадиями подготовки. Благодаря модульной конструкции Qpol 300BOT имеет такое соотношение цена-производительность, которое приносит экономический эффект даже для лабораторий с малым количеством образцов.

## GRINDING AND POLISHING STATIONS

The Qpol 300 BOT is constructed with stations for complete materialographic operations from planar grinding through intermediate steps and final polishing. All stations are integrated into the system. The grinding and polishing discs are fixed onto the working wheels by using a vacuum (Vacu-Jet System) or magnetic disc system. Each station can be configured for specific abrasive requirements. Water, diamond suspensions, diamond lubricant and oxide dispensing are fully integrated and controlled via programming. Grinding and polishing stations can also include fully automatic protective covers to maintain a clean work environment.

ПОЛНОСТЬЮ АВТОМАТИЧЕСКАЯ ШЛИФОВАЛЬНО-ПОЛИРОВАЛЬНАЯ МАШИНА QPOL 300 BOT

## УБЕДИТЕЛЬНЫЕ ПРЕИМУЩЕСТВА



### GRINDING AND POLISHING HEAD

The grinding and polishing head picks up a sample holder from the stack and travels to individual work stations to perform each cycle in the proper sequence. Upon completion, the head returns the holder to the stack. The use of two heads allows simultaneous grinding and polishing and optimizes the Qpol 300 BOT when preparing multiple specimen holders.



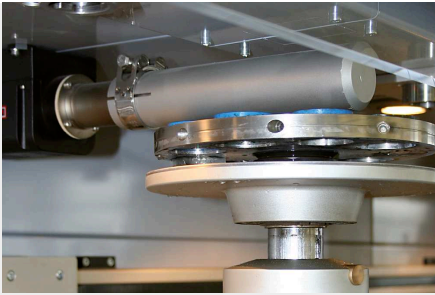
### SAMPLE HOLDER STACK

The sample holder racking system holds up to 12 sample holders. After starting the machine, the holders are taken out automatically for processing. After processing, the completed sample holders are returned to their original position with the polished surface facing upwards.



### FOIL CHANGER

In the storage elevator, there are four compartments for disposable grinding discs, such as SiC paper. The vacuum exchange arm grips the pre-selected SiC paper and places it onto the wheel. The Vacu-Jet system then operates immediately, securing the disc to the plate automatically. When finished, the used grinding paper is discarded.



### **WARM AIR DYING**

After final cleaning, a programmable warm air blower dries the samples with the polished side upwards. Then the dry samples are stored in the sample stack. The drying time is programmable.



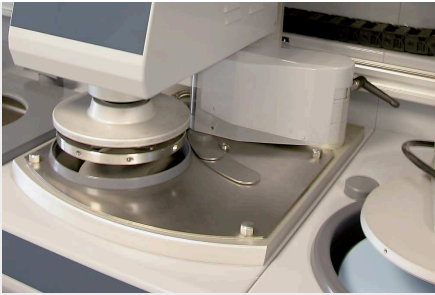
### **HIGH SPEED CLEANING STATION**

The cleaning station enables a fully automatic cleaning of the sample. The multi-step cleaning is carried out with water, air and alcohol. Cleaning times and steps are completely adjustable as needed.



### **DATA TRANSFER**

The QATM central lab is always looking for solutions for your problems. We can develop an optimum procedure for a particular sample and send it to you via data transfer. Acquired data can also be exchanged via an internal network. This enables reproducibility and comparison of procedures and parameters anywhere, anytime.

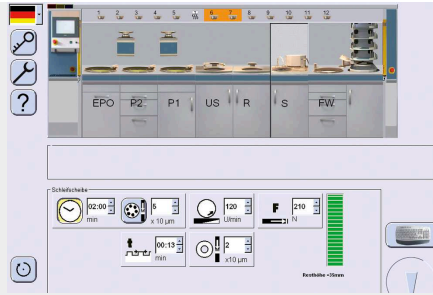


### SURFACE GRINDING STATION

The high speed grinding station planes the surface of the sample very quickly using an abrasive stone. The fully enclosed stone has an integrated recirculation coolant system in the cabinet. SiC and Al<sub>2</sub>O<sub>3</sub> grinding stones are kept flat by an automatic diamond dressing device with adjustable dressing depths and intervals.

The wearing surface of our standard grinding stone with glued carrier plate is 30 mm.

For diamond grinding disc applications, a cup-wheel with sample holder adaption is available for dressing the diamond surface in freely configurable intervals.



### TOUCH SCREEN CONTROL

Simple operation with drag-and-drop graphical touch-screen controls at the central panel that can slide to any work station. For each step, the screen shows a graphical representation of the working position. It is possible to follow the processing sequence in real time. The process sequence can be stored and then recalled as a complete program. A large number of programs can be stored and then recalled as needed. As standard equipment, there is a LAN connection for remote maintenance and monitoring by your facility or by QATM. This enables the recognition and removal of faults/errors or downloading of updates and procedures.

ЭТОТ ПРИБОР ИДЕАЛЬНО  
ПОДХОДИТ ДЛЯ ГЕОЛОГИИ И  
МИНЕРАЛОГИИ.



ПОЛНОСТЬЮ АВТОМАТИЧЕСКАЯ ШЛИФОВАЛЬНО-ПОЛИРОВАЛЬНАЯ МАШИНА QPOL 300 BOT

## INDIVIDUALLY CONFIGURABLE

With the Qpol 300 bot, all preparation steps up to the analysis can be performed. It is individually configured so that maximum sample throughput can be achieved with minimum space requirements. To achieve this, we analyse and optimise all preparation steps for the specific application in advance and then configure the system to suit the specific application.

1. Movable control panel (sideway) with touch screen control; individually programmed preparation cycles can be saved
2. Polishing head: clockwise/anti-clockwise rotation
3. Holder stack for six sample holders
4. Two grinding and polishing stations with variable speed of working wheels
5. Fully-automatic sample cleaning with water, Ethanol, air
6. Warm air dryer with timer
7. Grinding station with four different grinding media/grains stored in foil changer  
Grinding station with four different grinding media/grains stored in foil changer
8. Dosing drawer for storing of polishing suspensions
9. Settling tank



5 stations

### PERFECT GRINDING AND POLISHING – CONSUMABLES BY QATM

Grinding and polishing is more reliable, safe and efficient when processed with the right ingredients: knowledge, care and the right choice of consumables and instruments.



ПОЛНОСТЬЮ АВТОМАТИЧЕСКАЯ ШЛИФОВАЛЬНО-ПОЛИРОВАЛЬНАЯ МАШИНА QPOL 300 BOT

## ХАРАКТЕРИСТИКИ

<b>Рабочие диски</b>	max. $\varnothing$ 300 mm
<b><math>\varnothing</math>- держателя образца</b>	160 - 204 mm
<b>Скорость (голова)</b>	20 - 120 rpm
<b>Усилие центрального давления</b>	50 - 450 N
<b>Speed working wheel (grinding and polishing station)</b>	50 - 600 об/мин
<b>Шлифовальный камень</b>	$\varnothing$ 350 мм
<b>Cleaning station</b>	air, water, ethanol (option)
<b>Power ultrasonic cleaning station</b>	400 W
<b>Потребляемая мощность</b>	4,3 - 15,6 kVA (depending on configuration)
<b>Габариты ШxВxГл</b>	2260 - 4020 mm (4 - 8 Stations) x 1750 x 950 mm

[www.qatm.com/qpol-300-bot](http://www.qatm.com/qpol-300-bot)

## ИНФОРМАЦИЯ ДЛЯ ЗАКАЗА